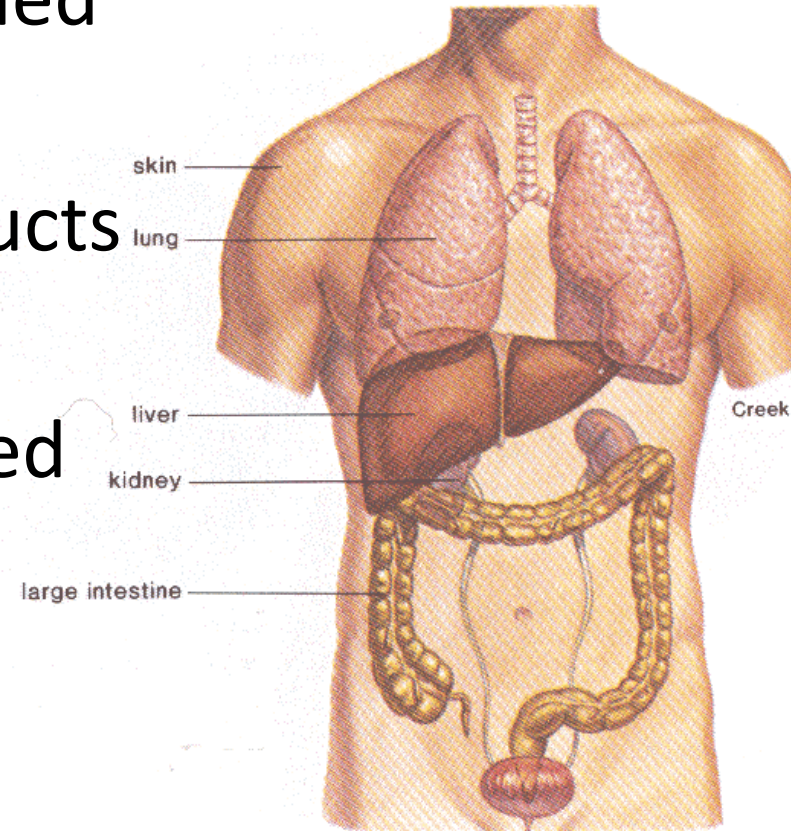


# Excretory System



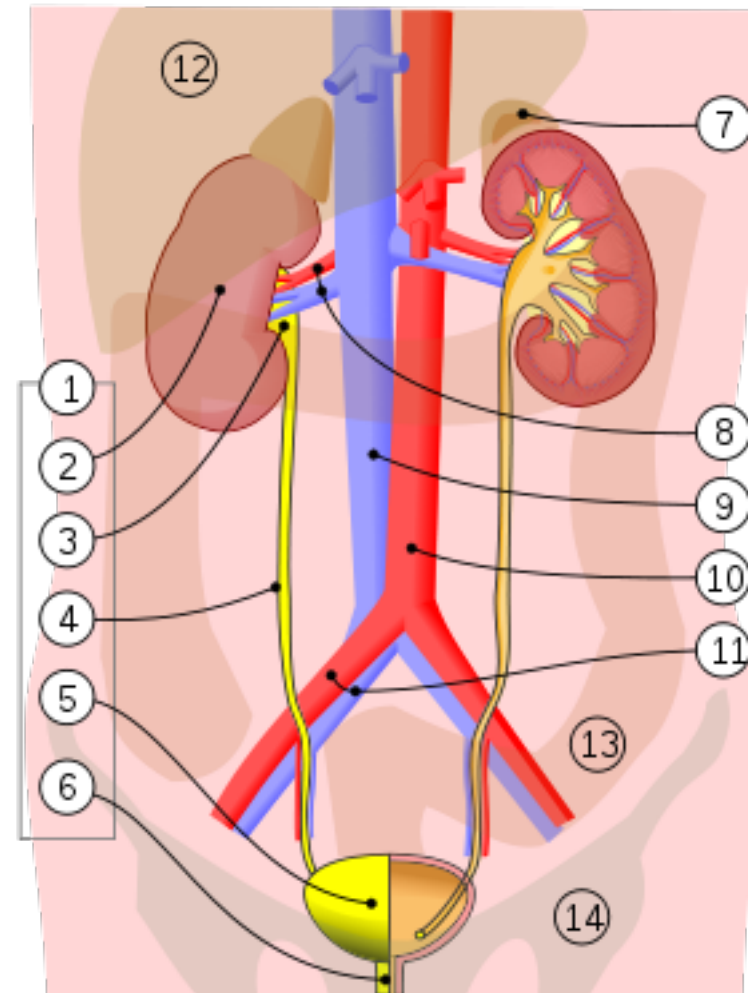
# Excretory System

- Without the excretory system, the other parts of the body would eventually be poisoned by waste.
- Eliminates useless by-products from cells
- Maintains a steady, balanced chemical concentration



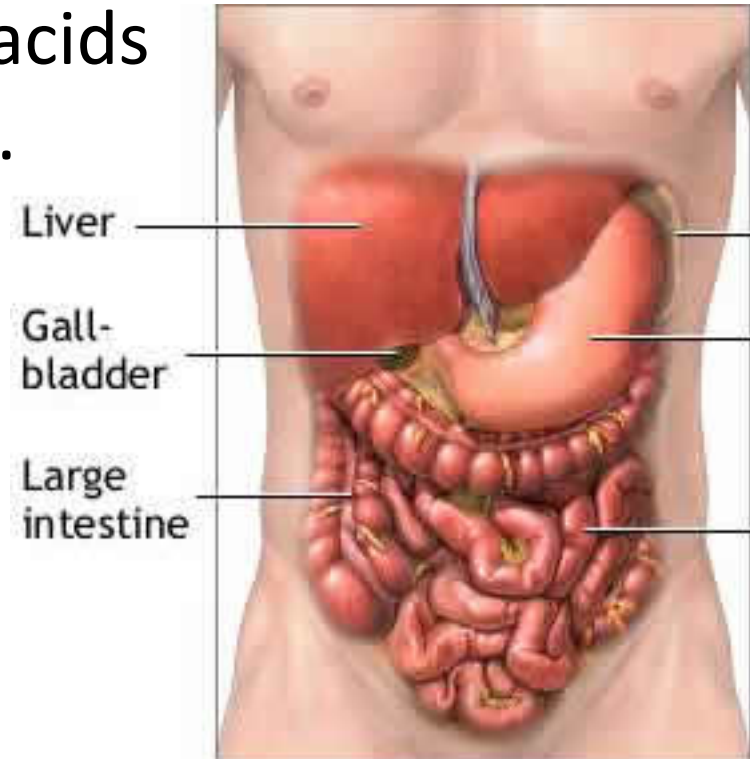
# Urinary system

- Removes the poison urea from our blood stream
- Removes excess water and salts from our body



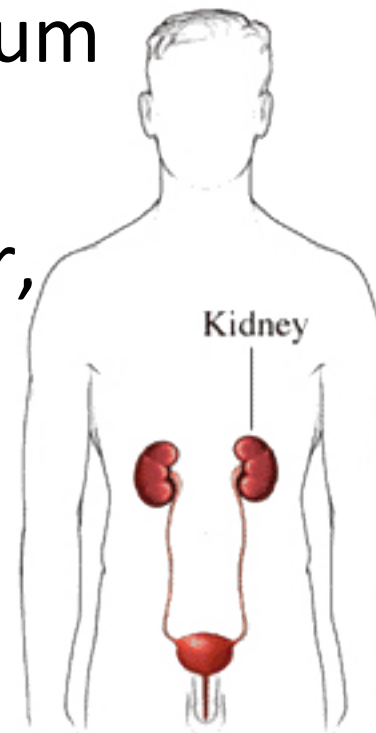
# Liver

- Urea is the waste product of breaking down proteins for the body to use.
- The liver filters excess amino acids and processes them into urea.

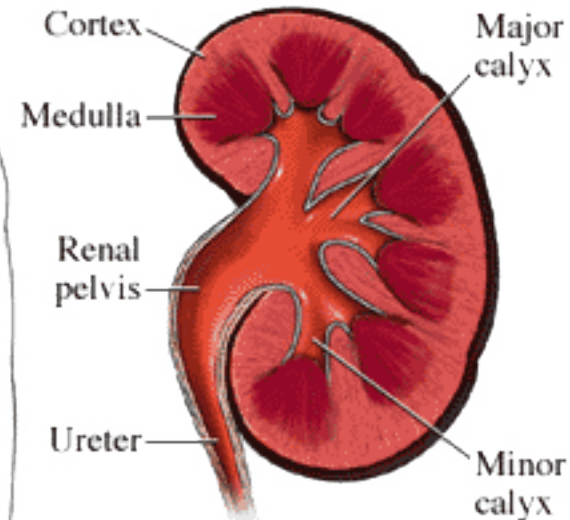


# Kidneys

- Filters called nephrons remove urea from our blood stream and balances salts (potassium and sodium)
- Urine consists of water, urea, and salts



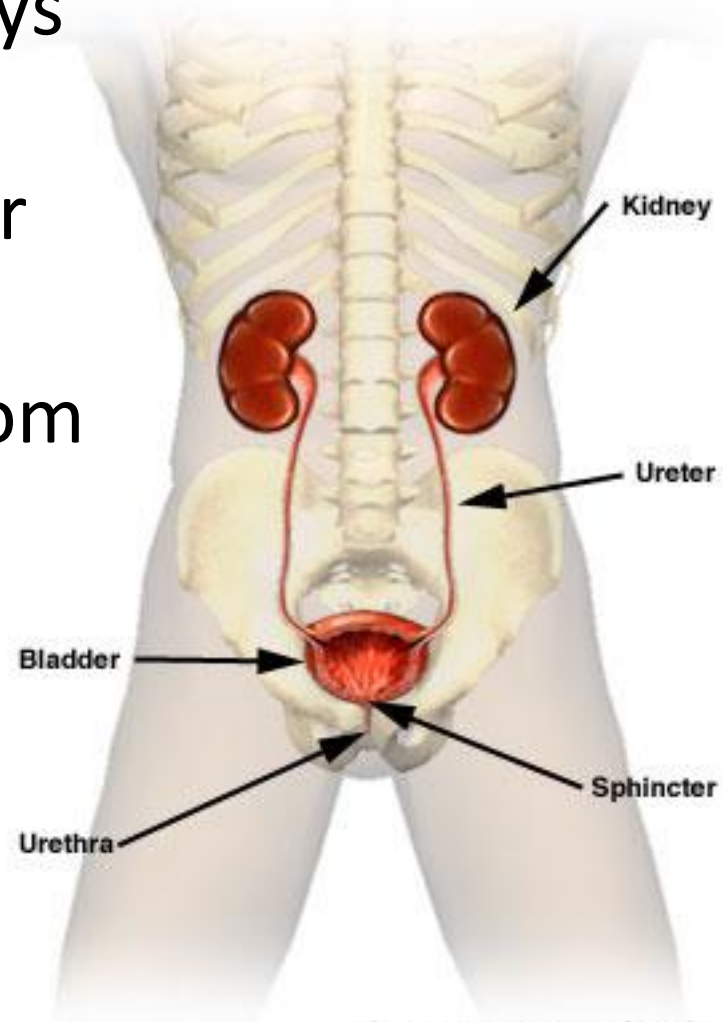
Cut-away of kidney





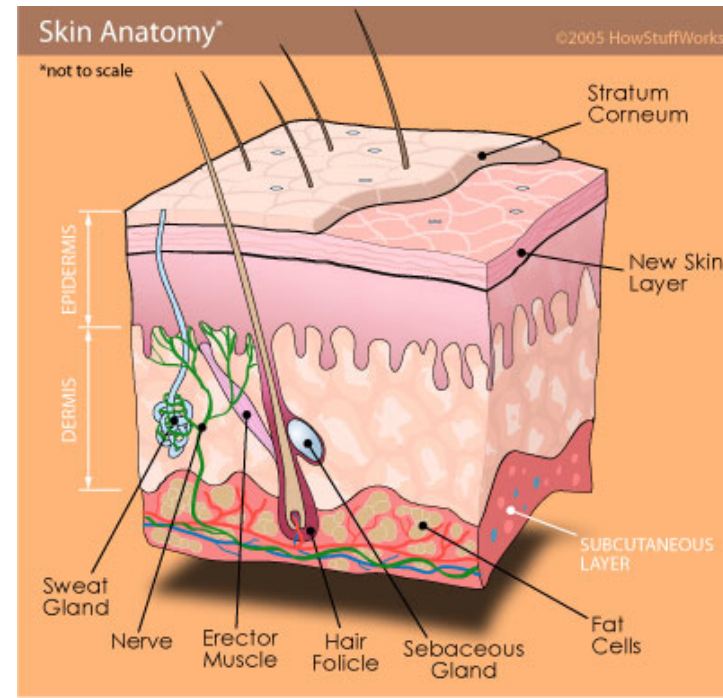
# Bladder

- Urine travels from the kidneys through tubes called ureters
- Urine is stored in the bladder
- Circular muscles called sphincters keep the urine from leaking out of the bladder
- Urine exits out of the body through a tube called the urethrae



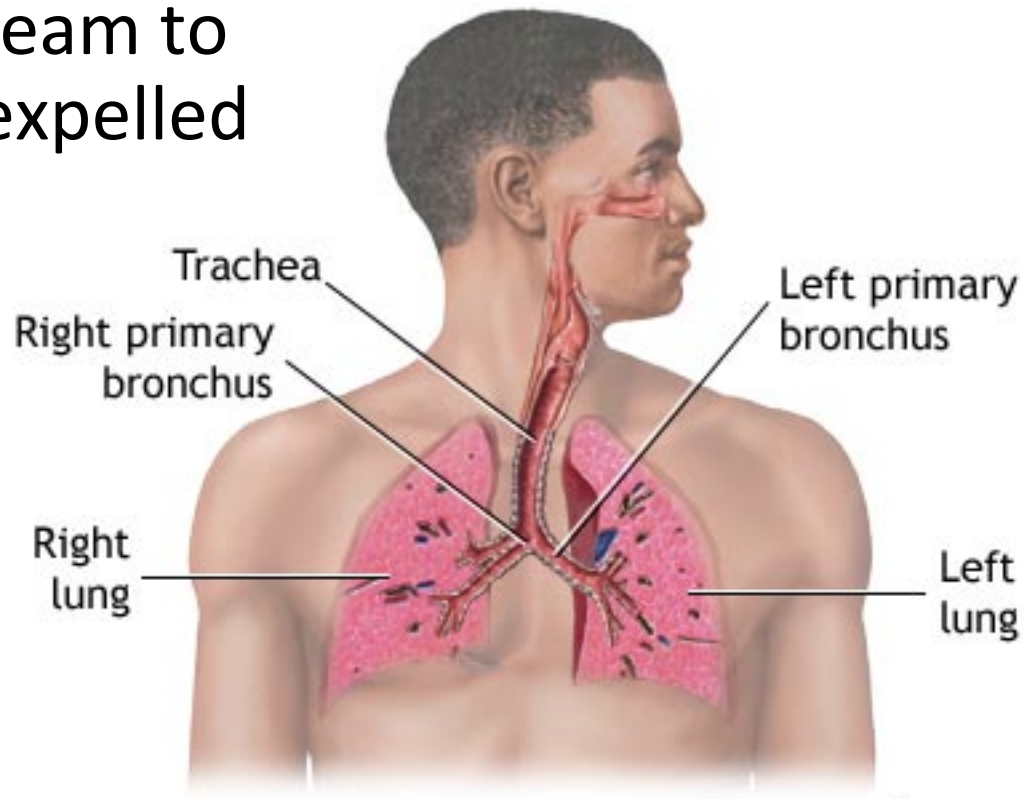
# Sweat glands

- keep our bodies cool
- get rid of wastes, including salts that our body doesn't need.
- there are over 2 million of them in each person!



# Lungs

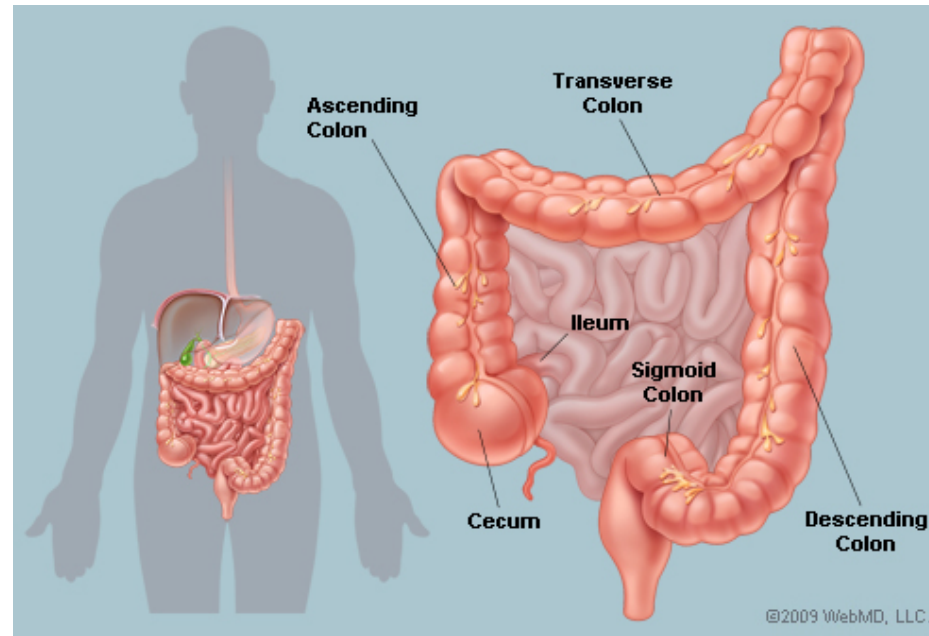
- Cells produce carbon dioxide as waste.
- Carbon dioxide travels through the blood stream to the lungs where it is expelled out of the body





# Solid Waste

- Moisture is reabsorbed by the body in the colon or large intestine.
- Material that the body could not use is expelled through the anus.



# Kidney Failure

- May be caused by injury, infection, or improper blood supply to the kidneys.
- Kidneys fail to filter wastes properly.
- Can be treated through dialysis
  - filtering blood with a machine.
- Can also be treated with a kidney transplant

